

# SJ PLUS-EVO



## **SUPERDRY SINGLE JET METER**

SJ Plus / Evo represents the new generation of single jet meter for residential use. The innovative automated production line combines high production capacity with the highest quality. Sj Plus/Evo achieves the highest metrological performance in its category. It can be equipped with the latest remote data transmission technologies.

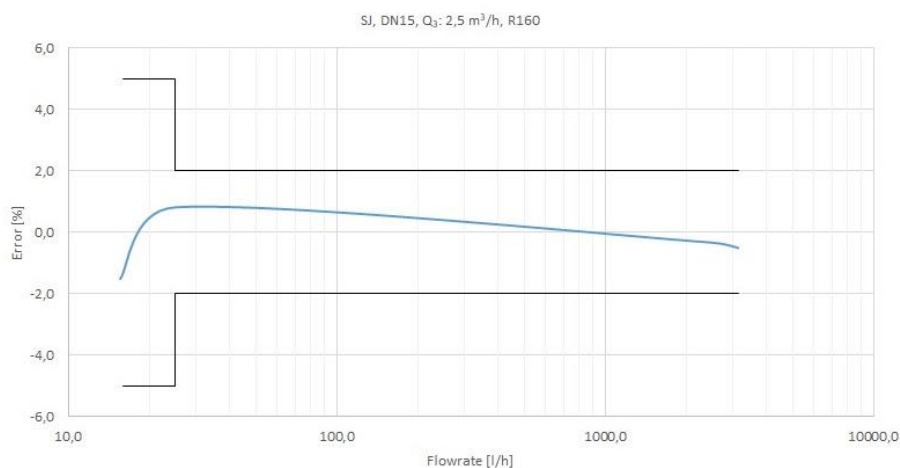
# SJ PLUS-EVO

## FEATURES

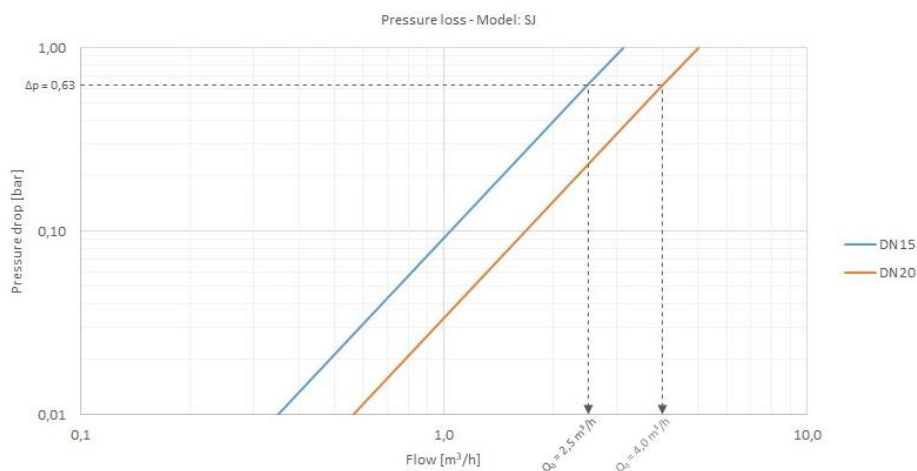
- Superdry single jet meter for hot or cold water
- Ideal for domestic indoor divisional applications (submetering)
- MID-certified: R max 160
- DN: 15÷20
- Health certifications available for a number of countries
- Supports various installation positions
- High protection against external magnetic fields
- Register can be rotated 360°
- Can be provided fitted with wired or radio communication module
- Options available for reed switch (Plus) 1P=10L or static (Evo) 1P=1L pulse emitter



## TYPICAL ERROR CURVE



## HEAD LOSS DIAGRAM



## METROLOGICAL PERFORMANCE

Size	mm	15	20
	in	½	¾

Module B no. TCM 142/20 – 5700

Module D no. 0119-SJ-A010-08

Q <sub>3</sub> /Q <sub>1</sub> = R Referred to installation position	H↑ ≤ 100 H→; V↓ ≤ 50 V↑ ≤ 40	H↑ ≤ 160 H→; V↓ ≤ 80 V↑ ≤ 63	H↑ ≤ 100 H→; V↓ ≤ 50 V↑ ≤ 40	H↑ ≤ 160 H→; V↓ ≤ 80 V↑ ≤ 63

### MID standard performance \*

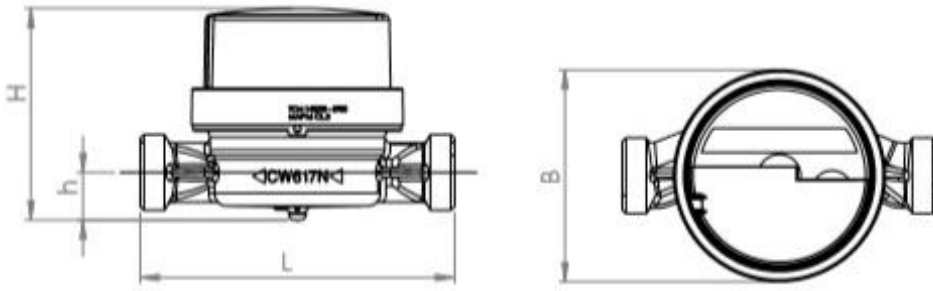
Q <sub>3</sub>	m <sup>3</sup> /h	1,6	2,5	4
Q <sub>4</sub>	m <sup>3</sup> /h	2	3,13	5
<b>R</b>			<b>100</b>	
Q <sub>1</sub>	l/h	16	25	40
Q <sub>2</sub>	l/h	25,60	40	64

\* Other values of R available upon request.

## TECHNICAL DATA

Maximum permissible error between Q <sub>1</sub> and Q <sub>2</sub> (excluded)		+/- 5%	
Maximum permissible error between Q <sub>2</sub> (included) and Q <sub>4</sub>		+/- 2% with water temperature ≤ 30°C +/- 3% with water temperature > 30°C	
Temperature class		T30, T50, T30/90	
Flow profile sensitivity classes		U0 – D0	
Starting flow rate	l/h	6	8
Head loss		ΔP63	
Nominal pressure	bar	16	
Maximum reading	m <sup>3</sup>	99.999	
Minimum reading	l	0,05	
Indicative weight	kg	0,35	0,45

## DIMENSIONS



Size	mm	15	20
	in	1/2	3/4
Thread	in	G 3/4 B	G 1 B
L	mm	80*/110/115/120/130 *only Q <sub>3</sub> 2,5 R ≤H100 VR63	115/130
H	mm		74
h	mm	11,7	16,7
B	mm		65

## COMMUNICATION MODULES



M-BUS<sup>EVO</sup>



RADIO<sup>EVO</sup> 868



REED SWITCH per SJ PLUS



PULSE EVO

For more information on all the accessories available, consult the specific technical data sheets on the website [www.maddalena.it](http://www.maddalena.it)